

Thanet District Council



Thanet Cycling & Walking Audit Recap, Rural Audit & Stakeholder Engagement

Climate Change CAG - 7th August 2023

Morgan Sproates
(Regulatory Services Manager)
Adrian Verrall
(Strategic Planning Manager)

Aims & Objectives

- Active Travel England's (ATE) aims and objectives are to support ambitious and inclusive active travel programmes. In particular, building capability to plan and deliver high quality walking, wheeling and cycling infrastructure networks, effectively engaging local communities and collecting evidence of impact to inform optimisation of future programmes.
- The Cycling and Walking infrastructure Plan (CWIP) is a district wide plan which seeks to connect people and places across the district with safe and accessible routes for everyone. This will help Thanet achieve its targets on carbon neutrality whilst improving air quality, health, access, highway safety and the economy.

Recap - 2021 Urban Cycling & Walking Audit

- In 2020, the Council commissioned Sustrans, through the Active Travel Fund (£19k grant via KCC), to carry out an initial audit of the key walking and cycling routes in Thanet.
- This audit focussed on the **Urban Area** (Urban Air Quality Management Area), identifying eight priority cycling and walking routes; four core walking zones and two priority junctions for improvement.
- The project assessed conditions across Thanet with a focus on access to education and employment, to identify any gaps in the existing network. The output of the work will be a Local Walking and Cycling Infrastructure Plan (LCWIP) in line with Department for Transport (DfT) guidance.

Urban Cycling Routes, Walking Zones & Junctions

- 8 cycle routes - plus Dane Valley - [YouTube link](#) to cycle routes.
- 4 walking zones - Margate, Broadstairs, Ramsgate & St Peters
- 2 focus junctions:
 - Northern End of Route 3 (busy junction and awkward layout) and;
 - Route 6 (heavily trafficked and narrow, no left turn onto Rumfields road)

The initial cycle corridors link the three main settlements – Margate, Broadstairs and Ramsgate, while the walking zones focus on places with high pedestrian activity in the centres of Margate, Broadstairs and Ramsgate, as well as the school cluster in St Peters. Detailed recommendations were made at two focus junctions due to their complexity.

Thanet Walking and Cycling Audit: Map

Focus junctions



1

Cycle corridors Thanet



1



2



3



4



5



6

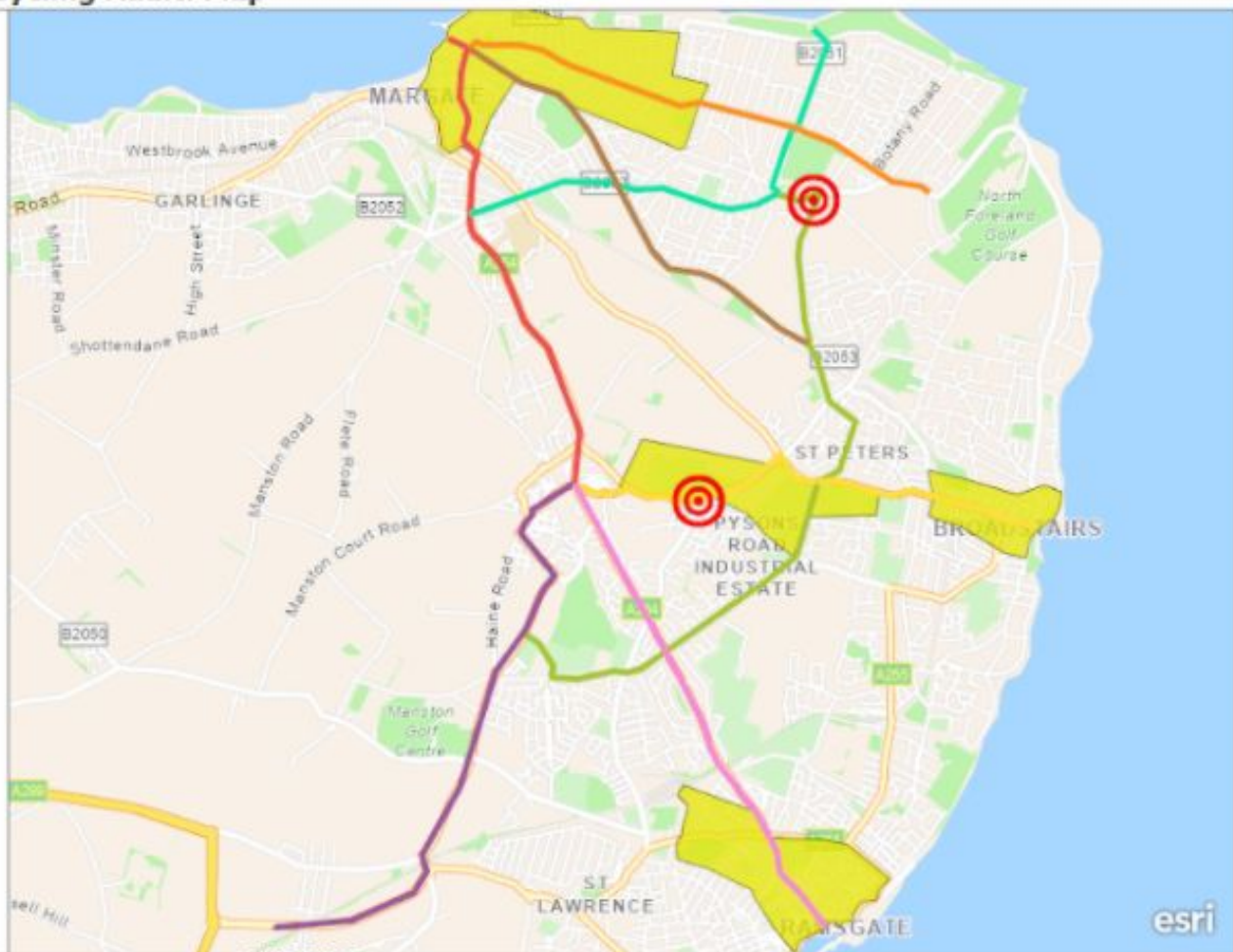


7



8

Core Walking Zone Thanet



Further Work - 2023 Capability Fund - £42k



£12,000 to assist with **development of the LCWIP**. Setting out infrastructure investment priorities, integrating with local behaviour change initiatives and wider policies and targets, and local plans. Overall network plan with rationale and priorities.

£20,000 to assist with a **Rural Audit** to feed into the LCWIP, to include consultation and public workshops to engage cycle groups, parishes and other stakeholders. Development and mapping of proposed network design.

£10,000 to assist with **Scheme Planning and Network Design** to the point of bidding for capital funds, including early plans sufficient for bid stage assurance against ATE design tools, for one scheme.

Tasks for next period

Initial stakeholder and community engagement

- Launch online engagement tool by Friday 14th July 2023.

Desktop network planning for cycling

- Review engagement outputs and draft cycle network

Planning for walking

- Review engagement outputs and draft walking network

Follow up stakeholder engagement

- Consult on the proposed walking and cycling network

Auditing of cycle routes

- Audit eight cycle routes and write up recommendations

Auditing of walking measures

- Audit three walking areas and write up recommendations

Prioritising improvements

- Develop prioritisation table

Delivery by
12th January
2024

Project Timelines

Thanet District CWIP



Stakeholder Engagement

- **Minster Village Hall - 22nd June**
- **Thanet Council Offices - 23rd June**
 - Members & Officers
- **Online Engagement Tool:**
 - Out now...!



Thanet Cycling and Walking Infrastructure

Welcome!

Sustrans are working with Thanet District Council to develop a Cycling and Walking Infrastructure Plan (CWIP). Sustrans is the charity making it easier for people to walk and cycle.

This tool is being circulated as part of the first round of engagement to help us identify a walking and cycling network for the district. For more details about the CWIP, click the information icon in the bottom right corner.

A map of Thanet showing cycling and walking routes. The routes are marked with blue lines and numbered yellow circles (6, 14, 25, 28). Key locations labeled include Birchington, Manston, Manston Airport, Ramsgate, and Roadstairs. A 'Log in or postcc' button is visible in the bottom left corner.

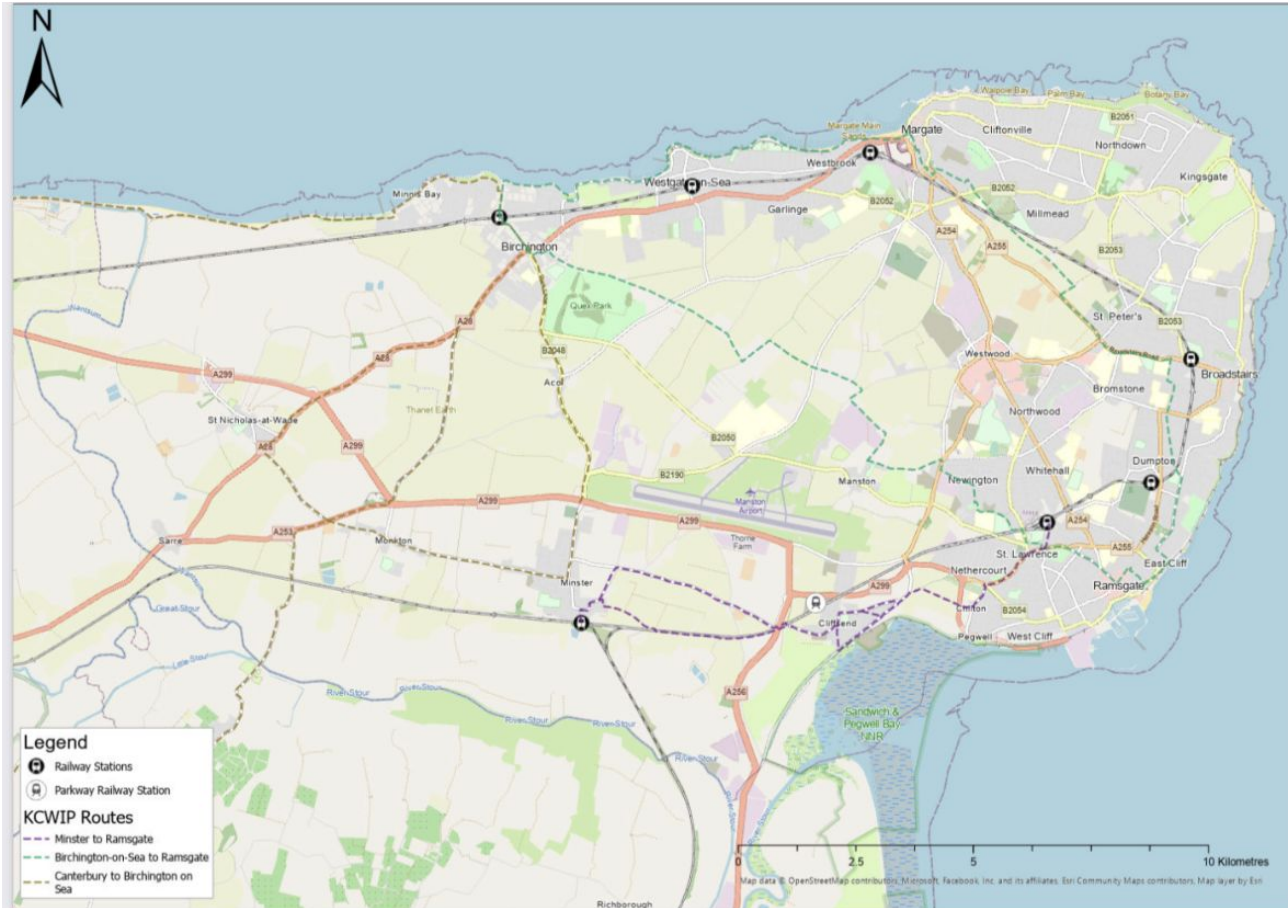
Log in or postcc



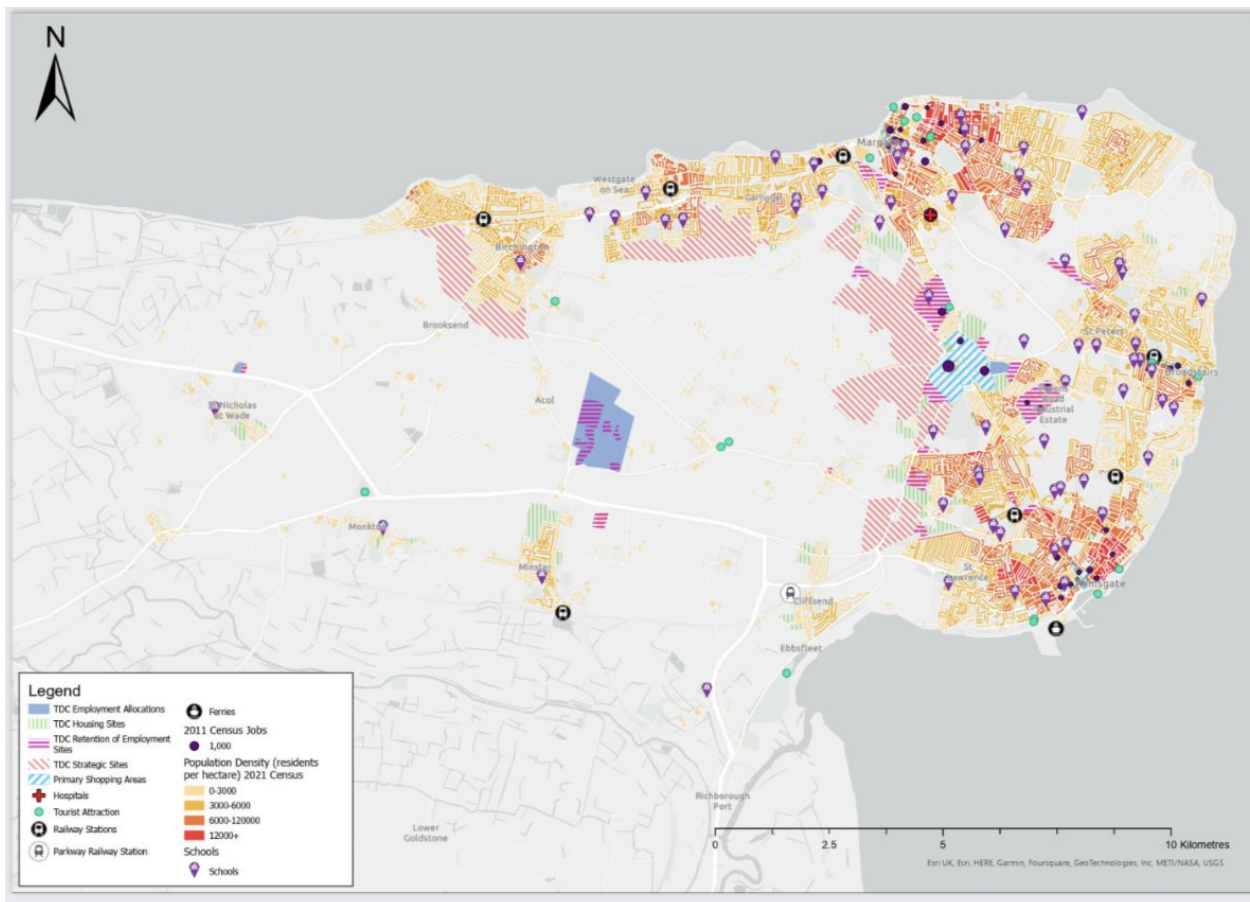
Help create a vision for the future of walking and cycling in Thanet

- Sustrans are working with Thanet District Council to develop a Cycling and Walking Infrastructure Plan (CWIP).
- This project will focus on the rural part of the district and will build on the work undertaken in 2021 which focused on the urban areas of Thanet.
- We are carrying out engagement to help us understand who is currently walking or cycling and where they want to go, but also importantly, who is not currently walking or cycling, and what the barriers are.
- The input will help us develop a walking and cycling network for the district which will be prioritised, and a costed programme of high-level proposals will be produced for which Thanet District Council will then seek funding opportunities.

Existing Network



Attractors and Generators



Initial Feedback - Rural Audit

- Collington Road/Grinsell Hill/The Lanes/Foxborough Lane which links Minster with Cliffsend is a dangerous road with high traffic speeds and volumes. It is used as a rat run for vehicles avoiding the A299. It currently comprises part of the Viking Coastal Trail but many contributors felt it was too dangerous for cycling and should not form part of a promoted cycle route
- The Lord of the Manor junction is a key barrier to east to west as well as north to south movements
- There is a lot of desire for a safe cycle route connecting to the new Parkway Station, particularly from Minster, Manston and Manston Business Park
- There is a need for a safe cycle link between Minster and the schools located in/near Broadstairs and Ramsgate
- A long route between Monkton and Ramsgate, via Minster and Parkway Station/Cliffsend would be beneficial

Initial Feedback - Rural Audit (cont.)

- There is a need for some high quality north to south routes across the Isle, particularly from Birchington to Monkton and to Minster
- There is a lack of pedestrian infrastructure in some of the smaller villages such as St Nicholas-at-Wade and Sarre
- Pavement parking is a big issue across the district and discourages people walking, particularly with pushchairs, wheelchairs and dogs
- The North Thanet Link and the rest of the Inner Circuit has the potential to greatly improve pedestrian and cycle accessibility but only if accompanied by good infrastructure. Currently proposals could be improved with more/better crossing provision and infrastructure on both sides of the roads instead of just one
- There was disappointment that the A28 Birchington to Margate cycle route hasn't come forward as this would have provided safe access to three large secondary schools and other uses

Engagement Tool Comms

The
Loop



facebook



Thanet
GP
Surgeries

Do you walk or cycle in
Thanet? Or do you want
to walk or cycle more?



Help shape the
future of walking
and cycling in Thanet
by sharing your key
routes and destinations.

SCAN ME



Thanet Cycling and Walking Infrastructure Plan (CWIP) Online Engagement Tool

The tool can be accessed via this link:

<https://communitymap.uk/project/152>

The tool will be open until **Sunday 13th August** at midnight.